

YOUTH CLUBS HAMPSHIRE AND ISLE OF WIGHT

Working to Enable Young People to Fulfil Their True Potential

CAT MARK DEVELOPMENT WORKER (15 hours per week)

Some information about us...

WHO ARE WE? We are an organisation comprising approximately 120 youth clubs, groups and projects in Hampshire and the Isle of Wight involving some 17,500 young people and 2000 youth workers. We employ a small team of youth work professionals who are based at our offices in Winchester. We have been delivering a continuous service since 1942 as a registered charity and a company limited by guarantee.

WHAT DO WE DO? We work with both young people and youth workers to achieve our aim of working to enable young people to fulfill their true potential.

WHY DO WE DO IT? "To help and educate young people especially, but not exclusively, through their leisure time activities so to develop their mental, physical and spiritual capacities that they may grow to full maturity as members of society, that their condition of life may be improved" (*Extract from Youth Clubs Hampshire and Isle of Wight's Constitution*)

WHO ARE WE LOOKING FOR? You will be someone who has experience of working with young people in an informal education setting and would like to run and develop this "flagship" piece of Participation work with young people.

You should be available to work 15 hours per week including days, evenings and some weekends. Some of your time will be spent working from our base in Winchester but mostly you will be supporting young assessors carrying out assessments.

You'll need to have access to your own vehicle and be willing to travel across Hampshire, Southampton, Portsmouth and the Isle of Wight.

WHAT WILL WE DO FOR YOU? We will welcome you into our friendly and dynamic team, support you through your induction to the organisation and help make sure you've got the tools you need to do your job. We'll also offer access to appropriate training opportunities. We will reimburse all pre-agreed travel on behalf of the organisation and offer you a competitive package including 5 weeks annual leave and private health care.

Pay Scale: £14.00-£15.25 per hour depending on experience.



YOUTH CLUBS HAMPSHIRE AND ISLE OF WIGHT

Working to Enable Young People to Fulfil Their True Potential

JOB DESCRIPTION: CAT MARK DEVELOPMENT WORKER

WE BELIEVE THAT: Good youth work practice is about creating a stimulating, supportive environment negotiated with the young people in which each individual may continue to grow ethically, morally, physically and emotionally and gain appropriate knowledge and experience, in order that they may find their place in society, whilst developing a positive regard for themselves and others.

YOUR ROLE: is to support the delivery of the CAT Mark contract which we run on behalf of Hampshire County Council and look at ways of developing the project. The CAT Mark programme is a quality mark given by young people for organisations delivering services to young people.

WHAT YOU'LL ACTUALLY DO:

You will:

- ✚ Recruit and train young assessors
- ✚ Recruit and train adult support workers
- ✚ Market the CAT Mark Project
- ✚ Book assessments
- ✚ Support young assessors during an assessment
- ✚ Support young assessors to put together the assessment report
- ✚ Look for ways to develop the project
- ✚ Manage the necessary administrative processes to support the project

Your job is to ensure that we meet our targets outline in the contract as well as seek ways of developing the scope of the project further.

LENGTH OF CONTRACT:

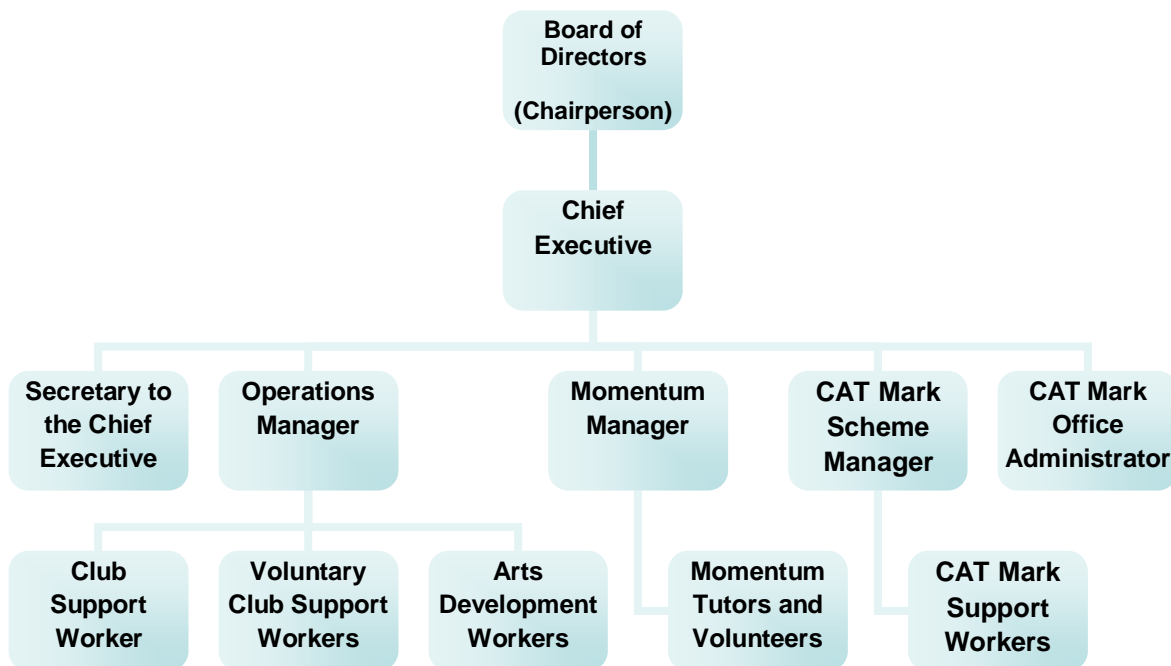
This is a piece of work contracted by Hampshire County Council on a yearly contract. The current contract ends on 31st March 2011 and this is the second year we have held this contract.

YOUTH CLUBS HAMPSHIRE AND ISLE OF WIGHT

Working to Enable Young People to Fulfil Their True Potential

We believe that young people deserve access to the highest quality youth work provision and your role is to help make that happen across Hampshire!

OUR STAFFING STRUCTURE:



YCHIOW AND VOLUNTEERS: Our staff work as a team and take an active interest in and support each other's work. The CAT Mark Development Worker should recognise that the volunteers play a key role in the work of the Organisation and the relationship between paid and voluntary workers is critical to the success of the Organisation. The relationship should be one of mutual trust based on a shared understanding of the different roles involved.

THE PRINCIPLES THAT UNDERPIN OUR WORK: The work of YCHIOW is driven by its commitment to the following principles:

- ✦ Youth work is about delivering work aimed at the social and personal education of young people.
- ✦ YCHIOW is committed to equal opportunities and staff will actively demonstrate this commitment throughout all aspects of their work.
- ✦ Young people have a right to be safe. YCHIOW will always work within its Child Protection and Health and Safety policies to ensure this right of all young people.
- ✦ Young people should be enabled to make informed choices and encouraged to take a full and active part in all aspects of their lives.

YOUTH CLUBS HAMPSHIRE AND ISLE OF WIGHT

Working to Enable Young People to Fulfil Their True Potential

PERSON SPECIFICATION: CAT MARK DEVELOPMENT WORKER

In order to be successful in the role of CAT Mark Development Worker you will need to already have some, but not all, of the skills and attributes listed here and be willing to work towards learning and developing those you do not already have.

CRITERIA	DESCRIPTION OF SKILL
Experience	✦ You must have experience of working with young people in an informal setting.
Management Skills	✦ Able to motivate and encourage other people ✦ Ability to organise and prioritise your time ✦ Able to encourage and support change
Interpersonal Skills	✦ Can work effectively as a member of a team ✦ Can lead by example and inspire others to achieve high standards
Communication Skills	✦ Have the ability to communicate with a wide range of different people in person, on the telephone and by email ✦ Able to challenge negative and unhelpful behaviour ✦ Ability to produce written feedback
Qualifications	✦ A full UK driving licence and access to own vehicle ✦ A youth work qualification such as NVQ2 or NVQ3 Youth Support Worker or equivalent
Other Requirements	✦ Have a flexible approach to the job and be willing to work evenings and the occasional weekend ✦ Able to load/unload equipment from car ✦ Numerate, literate and able to use Microsoft Office

If you would like to talk to us about the role of the CAT Mark Development Worker then please get in touch by email: ce.ychiow@ukonline.co.uk or by telephone 01962 852307.

